

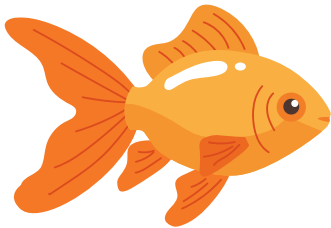
bird



chip



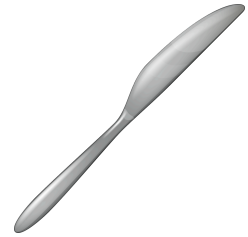
dog



fish



girl



knife



leg



mouse



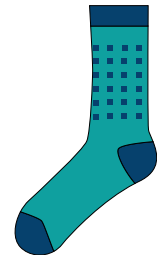
nose



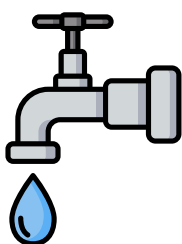
pen



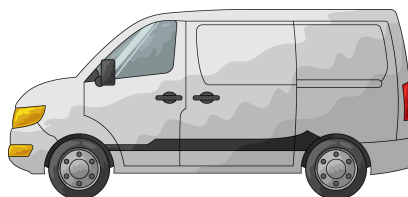
shoes



sock



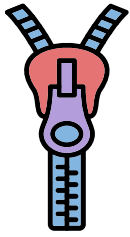
tap



van



watch



zip



jam



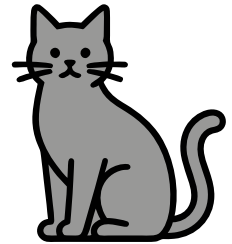
house



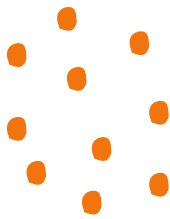
bob



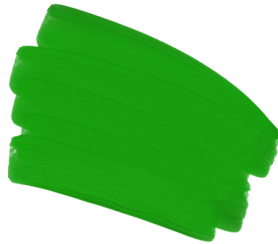
rain



cat



spot



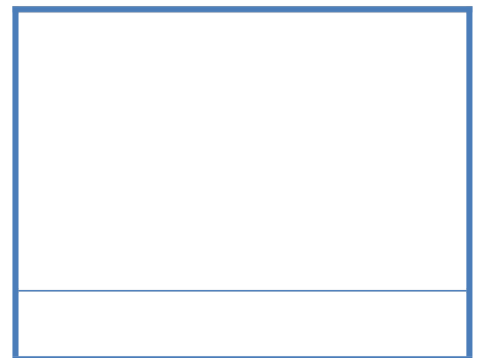
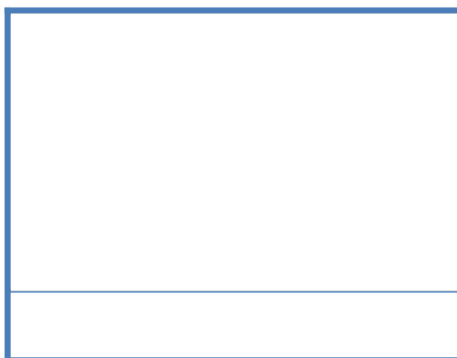
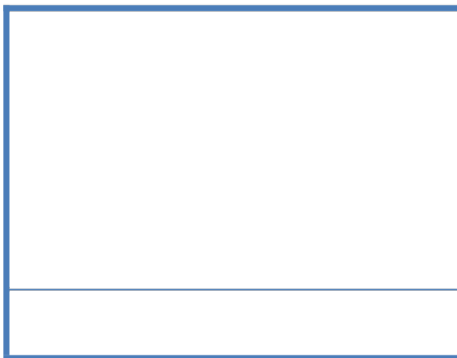
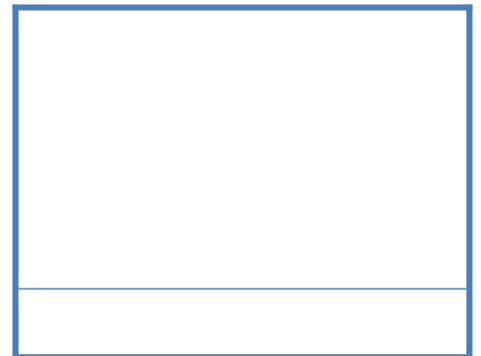
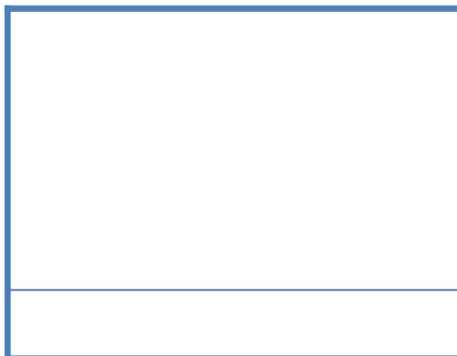
green



black



snake



### Coventry Speech Screen Record Sheet

Child's Name	Date of Birth	Date of Screen	
Bird	B	IR	D
Chip	CH	I	P
Dog	D	O	G
Fish	F	I	SH
Girl	G	IR	L
Knife	kN	I	Fe
Leg	L	E	G
Mouse	M	OU	Se
Nose	N	O	Se
Pen	P	E	N
Shoes	SH	OE	S
Sock	S	O	CK
Tap	T	A	P
Van	V	A	N
Watch	W	A	TCH
Zip	Z	I	P
Jam	J	A	M
House	H	OU	Se
Bob	B	O	B
Rain	R	AI	N
Cat	C	A	T
Spot	Sp	O	T
Green	Gr	EE	N
Black	Bl	A	CK
Snake	Sn	A	Ke