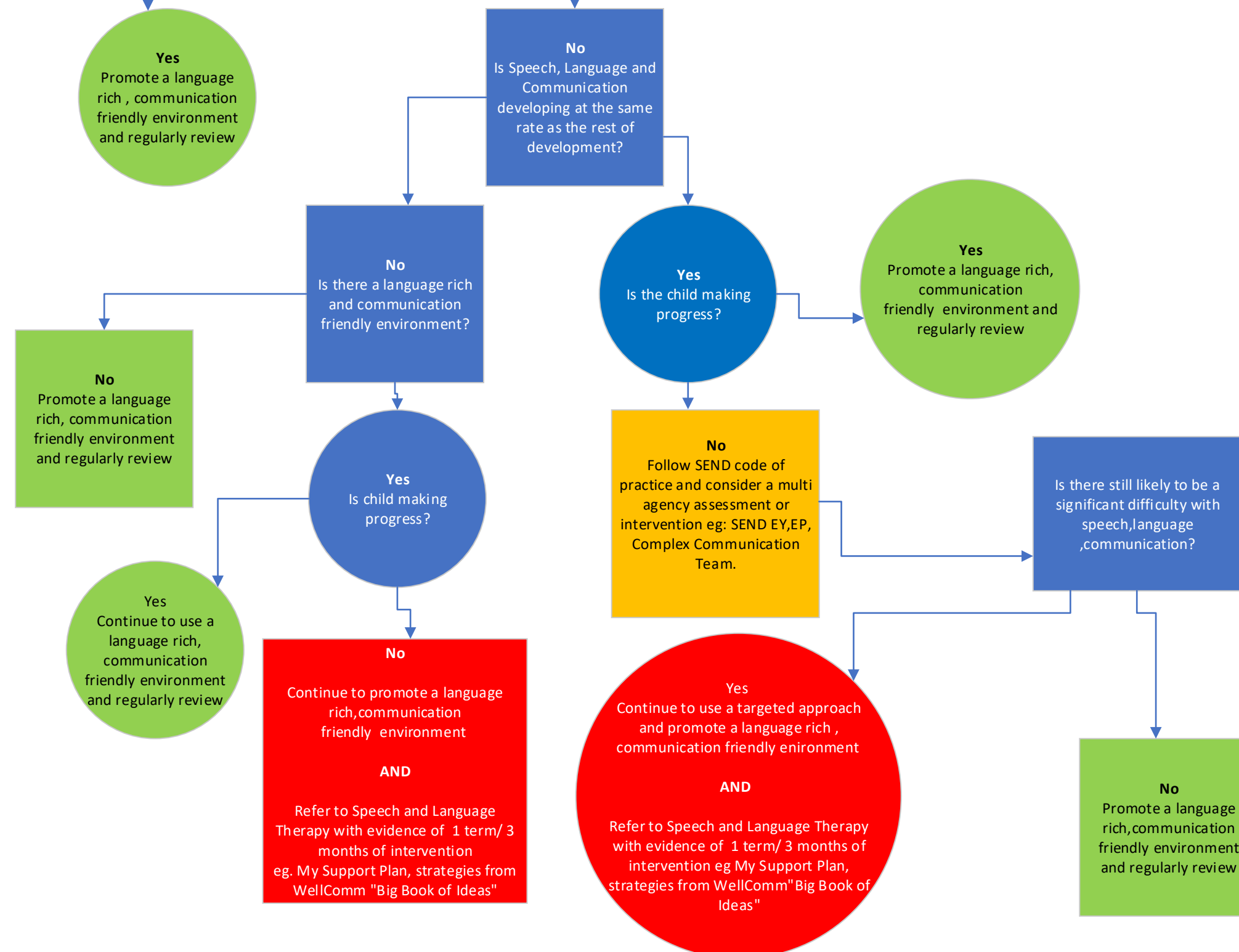


## Coventry Children's Speech and Language Therapy Referral Pathway

This pathway should be followed for all children and young people where there is a concern over Speech, Language and Communication development to inform whether referral on is necessary

Gather evidence of developmental milestones, involve parents/carers/other professionals in your decision making. Include all areas of development, including communication skills. Promote a language rich and communication friendly environment. Use a screening tool eg. WellComm

**Is the child's development age appropriate ?**



Refer straight to Speech and Language Therapy for children with difficulties with:  
Speech, Stammering, Voice , Eating and Drinking.  
Refer straight to Speech and Language Therapy for children who are deaf, have a cleft palate, a recent aquired brain injury, a pre 30 week gestation baby, a child in care.  
See the referral form for more details Referral - Childrens SSLT  
Referral - Childrens SSLT (coventrychildreSSLT.co.uk)

More information on developmental milestones and resources to support speech, language and communication needs can be found at [www.coventrychildreSSLT.co.uk](http://www.coventrychildreSSLT.co.uk)

<https://progress-checker.speechandlanguage.org.uk/>

More information on a Lanuage Rich and Communication Friendly Environment can be found:  
<https://speechandlanguage.org.uk/educators-and-professionals/resource-library-for-educators/creating-a-communication-supportive-environment-early-years/>

<https://speechandlanguage.org.uk/educators-and-professionals/resource-library-for-educators/creating-a-communication-supportive-environment-primary/>

<https://www.coventrychildreSSLT.co.uk/families/communication-friendly/>